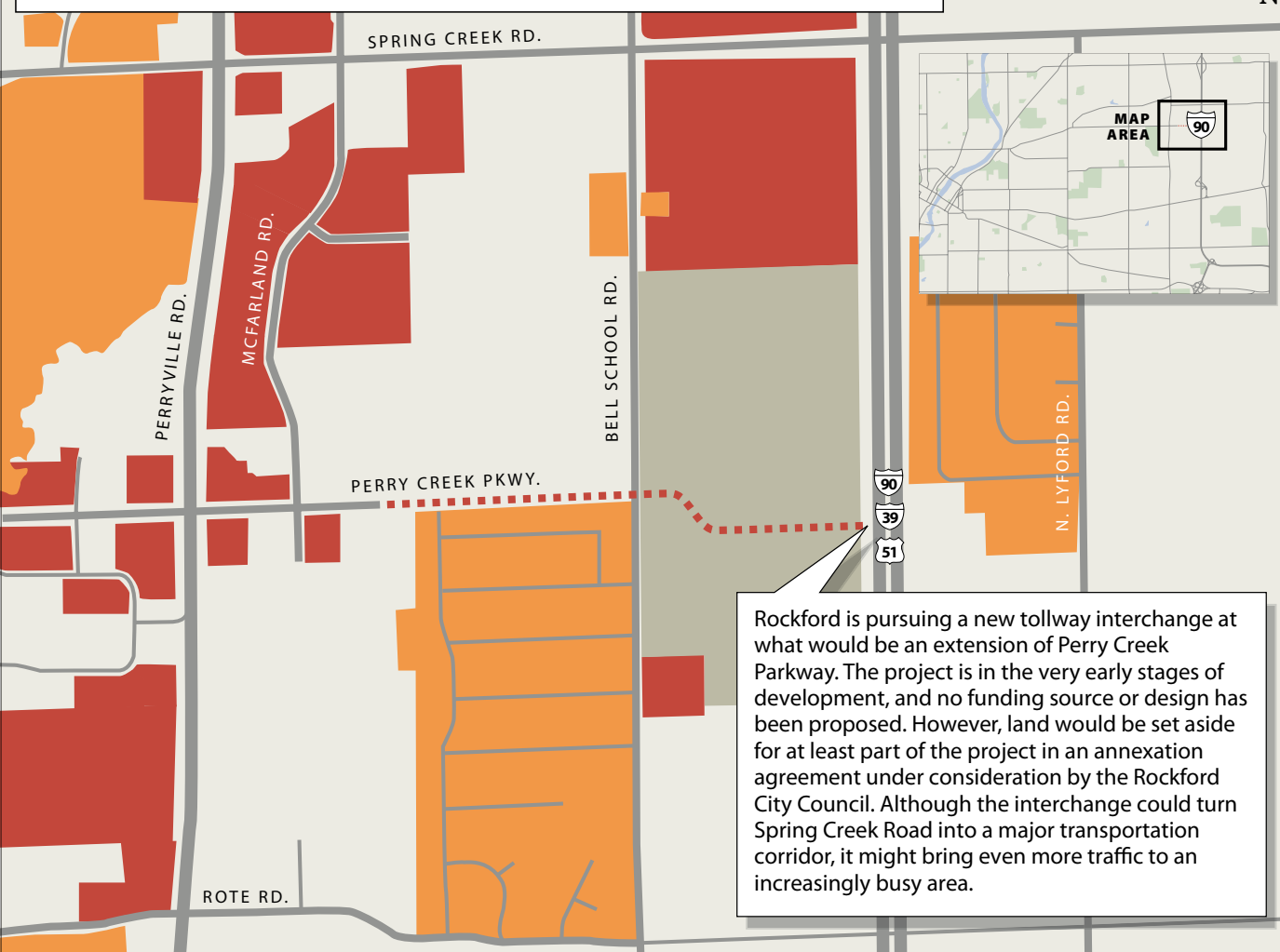


Residential development Nonresidential development Planned development

1/4 MILE



Rockford is pursuing a new tollway interchange at what would be an extension of Perry Creek Parkway. The project is in the very early stages of development, and no funding source or design has been proposed. However, land would be set aside for at least part of the project in an annexation agreement under consideration by the Rockford City Council. Although the interchange could turn Spring Creek Road into a major transportation corridor, it might bring even more traffic to an increasingly busy area.